

Anti-IKB epsilon NFKBIE Monoclonal Antibody
Catalog # ABO14523**Specification****Anti-IKB epsilon NFKBIE Monoclonal Antibody - Product Information**

Application	WB, IHC, IF, ICC, IP
Primary Accession	O00221
Host	Rabbit
Isotype	Rabbit IgG
Reactivity	Human
Clonality	Monoclonal
Format	Liquid

Description

Anti-IKB epsilon NFKBIE Monoclonal Antibody . Tested in WB, IHC, ICC/IF, IP applications. This antibody reacts with Human.

Anti-IKB epsilon NFKBIE Monoclonal Antibody - Additional Information

Gene ID 4794

Other Names

NF-kappa-B inhibitor epsilon, NF-kappa-BIE, I-kappa-B-epsilon, Ikb-E, Ikb-epsilon, IkappaBepsilon, NFKBIE, IKBE

Application Details

WB 1:500-1:2000
IHC 1:50-1:200
ICC/IF 1:50-1:200
IP 1:50

Contents

Rabbit IgG in phosphate buffered saline, pH 7.4, 150mM NaCl, 0.02% sodium azide and 50% glycerol, 0.4-0.5mg/ml BSA.

Immunogen

A synthesized peptide derived from human IKB epsilon Inhibits NF-kappa-B by complexing with and trapping it in the cytoplasm. Inhibits DNA-binding of NF-kappa-B p50-p65 and p50-c-Rel complexes.

Purification

Affinity-chromatography

Storage

Store at -20°C for one year. For short term storage and frequent use, store at 4°C for up to one month. Avoid repeated freeze-thaw cycles.

Anti-IKB epsilon NFKBIE Monoclonal Antibody - Protein Information

Name NFKBIE

Synonyms IKBE

Function

Sequesters NF-kappa-B transcription factor complexes in the cytoplasm, thereby inhibiting their activity (PubMed:9315679). Sequestered complexes include NFKB1-RELA (p50-p65) and NFKB1-REL (p50- c-Rel) complexes (PubMed:9135156, PubMed:9315679). Limits B-cell activation in response to pathogens, and also plays an important role in B-cell development (By similarity).

Cellular Location

Cytoplasm.

Tissue Location

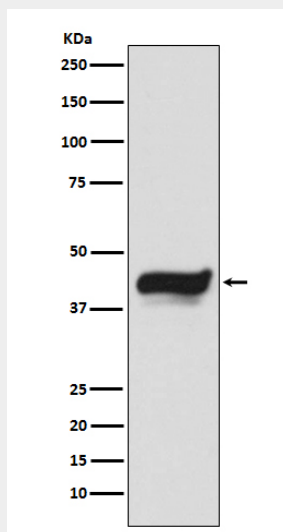
Highly expressed in spleen, testis and lung, followed by kidney, pancreas, heart, placenta and brain. Also expressed in granulocytes and macrophages

Anti-IKB epsilon NFKBIE Monoclonal Antibody - Protocols

Provided below are standard protocols that you may find useful for product applications.

- [Western Blot](#)
- [Blocking Peptides](#)
- [Dot Blot](#)
- [Immunohistochemistry](#)
- [Immunofluorescence](#)
- [Immunoprecipitation](#)
- [Flow Cytometry](#)
- [Cell Culture](#)

Anti-IKB epsilon NFKBIE Monoclonal Antibody - Images



Western blot analysis of IKB epsilon expression in HeLa cell lysate.